

Assessment Area

Noise Level

dB LAeq 24 hr

- 55 - 60
- 60 - 65
- 65 - 70
- ≥ 70

Zones

- Residential - Mixed Housing Suburban Zone
- Residential - Mixed Housing Urban Zone
- Residential - Terrace Housing and Apartment Buildings Zone
- Open Space - Conservation Zone
- Open Space - Informal Recreation Zone
- Open Space - Sport and Active Recreation Zone
- Business - Local Centre Zone
- Special Purpose Zone
- Road [i]

This map contains data derived in part or wholly from sources other than those party to the Supporting Growth Alliance, and therefore, no representations or warranties are made by those party to the Supporting Growth Alliance as to the accuracy or completeness of this information.

Map intended for distribution as a PDF document.
Scale may be incorrect when printed.

Contains information sourced from LINZ. Crown Copyright Reserved.

Unitary plan data sourced from Auckland Council published web services.
Legend information can be viewed on Auckland Council unitary plan viewer.

Linework shown on this plan is conceptual only.
Not to be used for construction.

Esri Community Maps Contributors, LINZ, Stats NZ, Esri, HERE, Garmin, Foursquare, METI/NASA, USGS, Eagle Technology, Land Information New Zealand, GEBCO, Community maps contributors

Map Scale @ A3:



Revision	Author	Verified	Approved	Date
1	Author	DRAFT	DRAFT	dd/mm/yyyy

FOR INTERNAL USE ONLY

Supporting Growth

AUP Maps - Do Minimum Scenario - NoR 1

Working Plans of Te Tupu Ngatahi.
For the purpose of INTERNAL workshops (not for wider distribution).

Client:	Supporting Growth
Project:	North West HIF



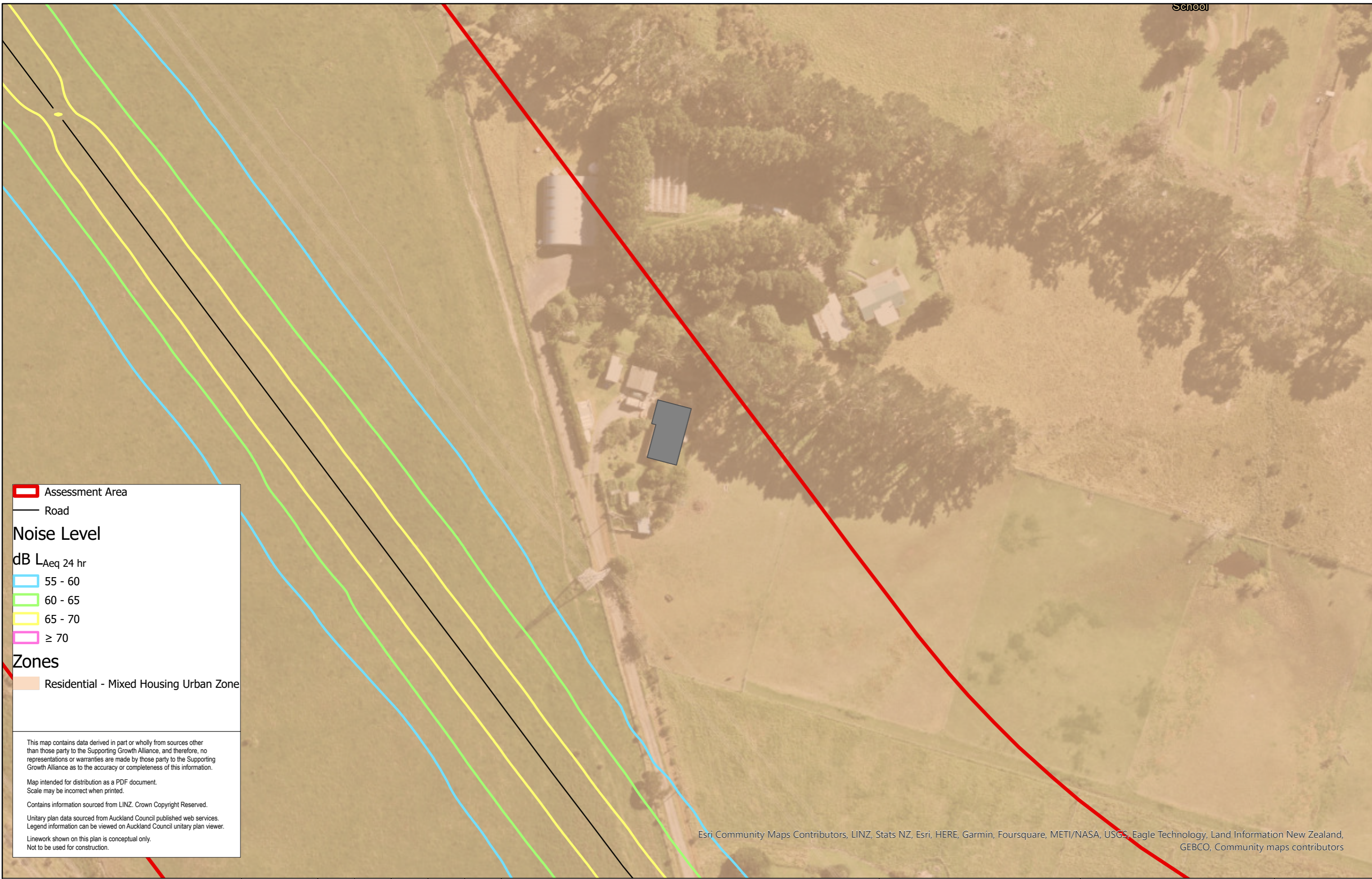
Discipline:	GIS
Drawing No:	SGA-NV-NW-013

School

Date Printed:

Name: 3_Do_Minimum_AUP

Path: C:\GIS\SGA_HIF_JRISGA_HIF_JR.aprx



Assessment Area

— Road

Noise Level

dB LAeq 24 hr

- 55 - 60
- 60 - 65
- 65 - 70
- ≥ 70

Zones

- Residential - Mixed Housing Urban Zone

This map contains data derived in part or wholly from sources other than those party to the Supporting Growth Alliance, and therefore, no representations or warranties are made by those party to the Supporting Growth Alliance as to the accuracy or completeness of this information.

Map intended for distribution as a PDF document.
Scale may be incorrect when printed.

Contains information sourced from LINZ. Crown Copyright Reserved.

Unitary plan data sourced from Auckland Council published web services.
Legend information can be viewed on Auckland Council unitary plan viewer.

Linework shown on this plan is conceptual only.
Not to be used for construction.

Esri Community Maps Contributors, LINZ, Stats NZ, Esri, HERE, Garmin, Foursquare, METI/NASA, USGS, Eagle Technology, Land Information New Zealand, GEBCO, Community maps contributors

Map Scale @ A3:



Revision	Author	Verified	Approved	Date
1	Author	DRAFT	DRAFT	dd/mm/yyyy

FOR INTERNAL USE ONLY

Supporting Growth

AUP Maps - Do Minimum Scenario - NoR 1

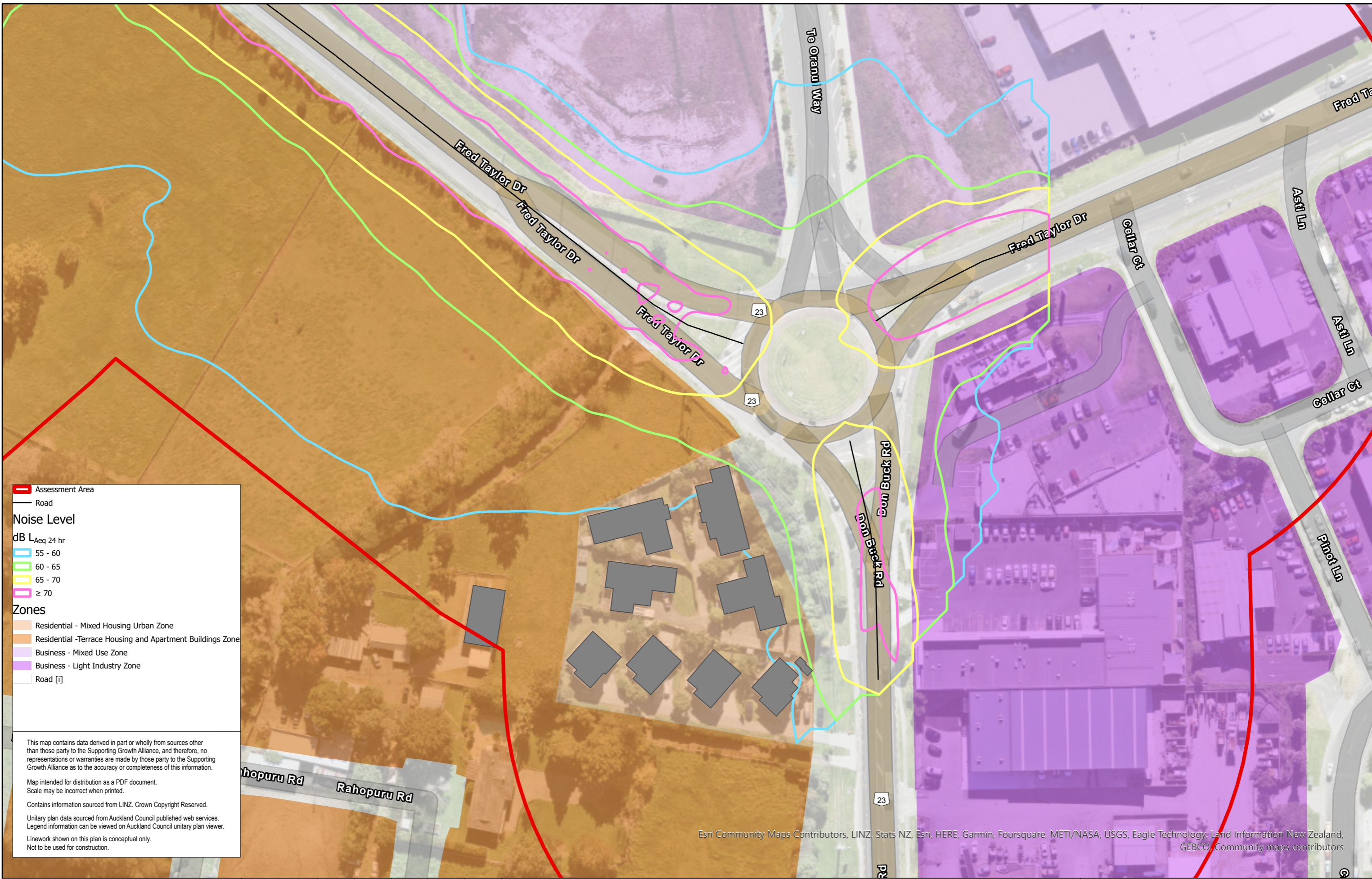
Working Plans of Te Tupu Ngatahi.
For the purpose of INTERNAL workshops (not for wider distribution).

YET TO BE VERIFIED.

Client:	Supporting Growth
Project:	North West HIF



Discipline:	GIS
Drawing No:	SGA-NV-NW-013



Assessment Area
 Assessment Area
 Road

Noise Level
 dB L_{Aeq} 24 hr
 55 - 60
 60 - 65
 65 - 70
 ≥ 70

Zones
 Residential - Mixed Housing Urban Zone
 Residential - Terrace Housing and Apartment Buildings Zone
 Business - Mixed Use Zone
 Business - Light Industry Zone
 Road [I]

This map contains data derived in part or wholly from sources other than those party to the Supporting Growth Alliance, and therefore, no representations or warranties are made by those party to the Supporting Growth Alliance as to the accuracy or completeness of this information.

Map intended for distribution as a PDF document.
 Scale may be incorrect when printed.

Contains information sourced from LINZ. Crown Copyright Reserved.

Unitary plan data sourced from Auckland Council published web services.
 Legend information can be viewed on Auckland Council unitary plan viewer.

Linework shown on this plan is conceptual only.
 Not to be used for construction.

Esri Community Maps Contributors, LINZ, Stats NZ, Esri, HERE, Garmin, Foursquare, METI/NASA, USGS, Eagle Technology, Land Information New Zealand, GEBCO, Community maps contributors

Map Scale @ A3:



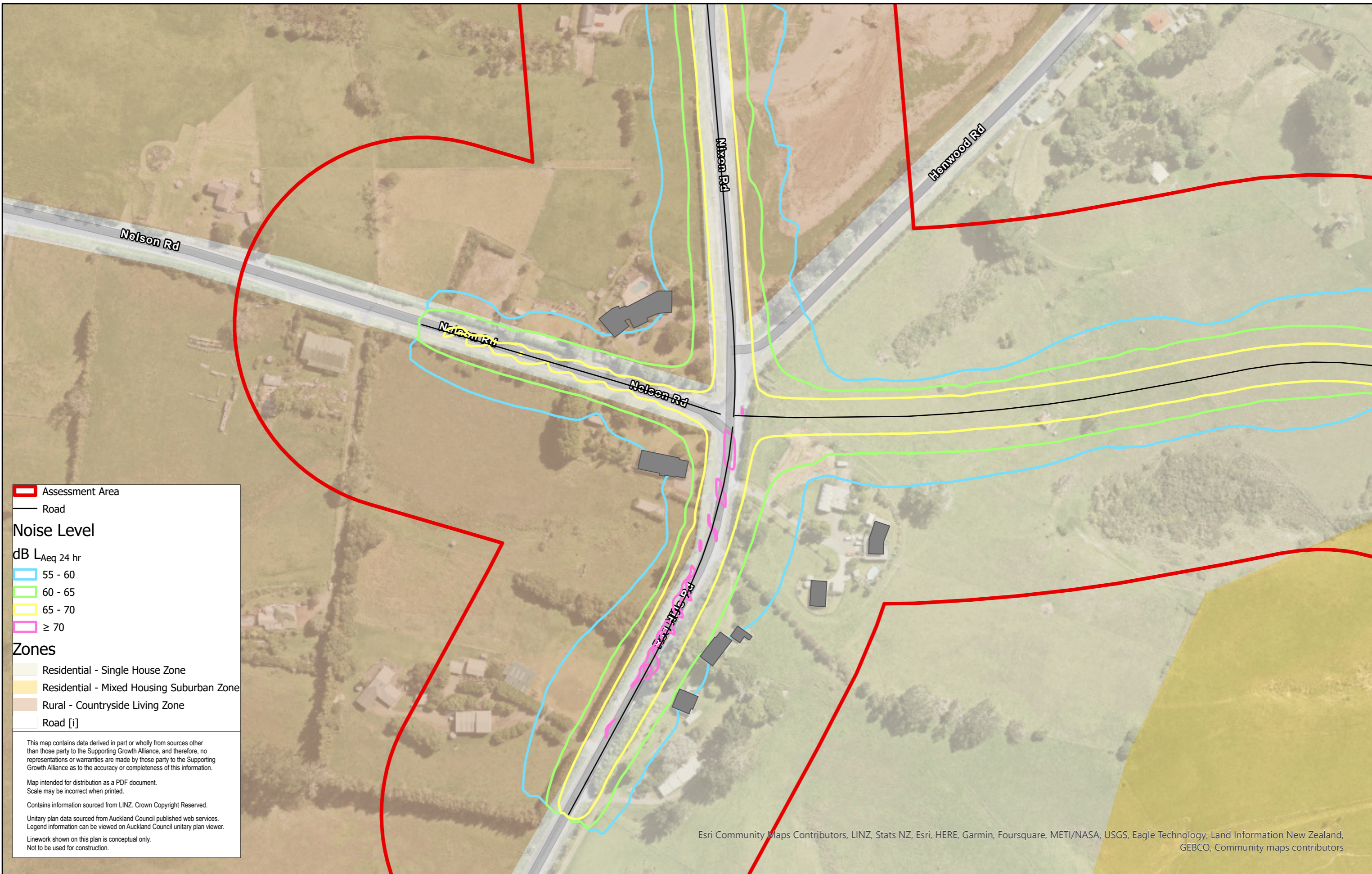
Revision	Author	Verified	Approved	Date
1	Author	DRAFT	DRAFT	dd/mm/yyyy

FOR INTERNAL USE ONLY
Supporting Growth
 AUP Maps - Do Minimum Scenario - NoR 2b
 Working Plans of Te Tupu Ngatahi.
 For the purpose of INTERNAL workshops (not for wider distribution).
YET TO BE VERIFIED.

Client:	Supporting Growth
Project:	North West HIF



Discipline:	GIS
Drawing No:	SGA-NV-NW-013



Assessment Area

Road

Noise Level

dB L_{Aeq} 24 hr

- 55 - 60
- 60 - 65
- 65 - 70
- ≥ 70

Zones

- Residential - Single House Zone
- Residential - Mixed Housing Suburban Zone
- Rural - Countryside Living Zone
- Road [i]

This map contains data derived in part or wholly from sources other than those party to the Supporting Growth Alliance, and therefore, no representations or warranties are made by those party to the Supporting Growth Alliance as to the accuracy or completeness of this information.

Map intended for distribution as a PDF document.
Scale may be incorrect when printed.

Contains information sourced from LINZ. Crown Copyright Reserved.

Unitary plan data sourced from Auckland Council published web services.
Legend information can be viewed on Auckland Council unitary plan viewer.

Linework shown on this plan is conceptual only.
Not to be used for construction.

Esri Community Maps Contributors, LINZ, Stats NZ, Esri, HERE, Garmin, Foursquare, METI/NASA, USGS, Eagle Technology, Land Information New Zealand, GEBCO, Community maps contributors

Map Scale @ A3:



Revision	Author	Verified	Approved	Date
1	Author	DRAFT	DRAFT	dd/mm/yyyy

FOR INTERNAL USE ONLY

Supporting Growth

AUP Maps - Do Minimum Scenario - NoR 2c

Working Plans of Te Tupu Ngatahi.
For the purpose of INTERNAL workshops (not for wider distribution).

YET TO BE VERIFIED.

Client:	Supporting Growth
Project:	North West HIF



Discipline:	GIS
Drawing No:	SSGA-NV-NW-013